

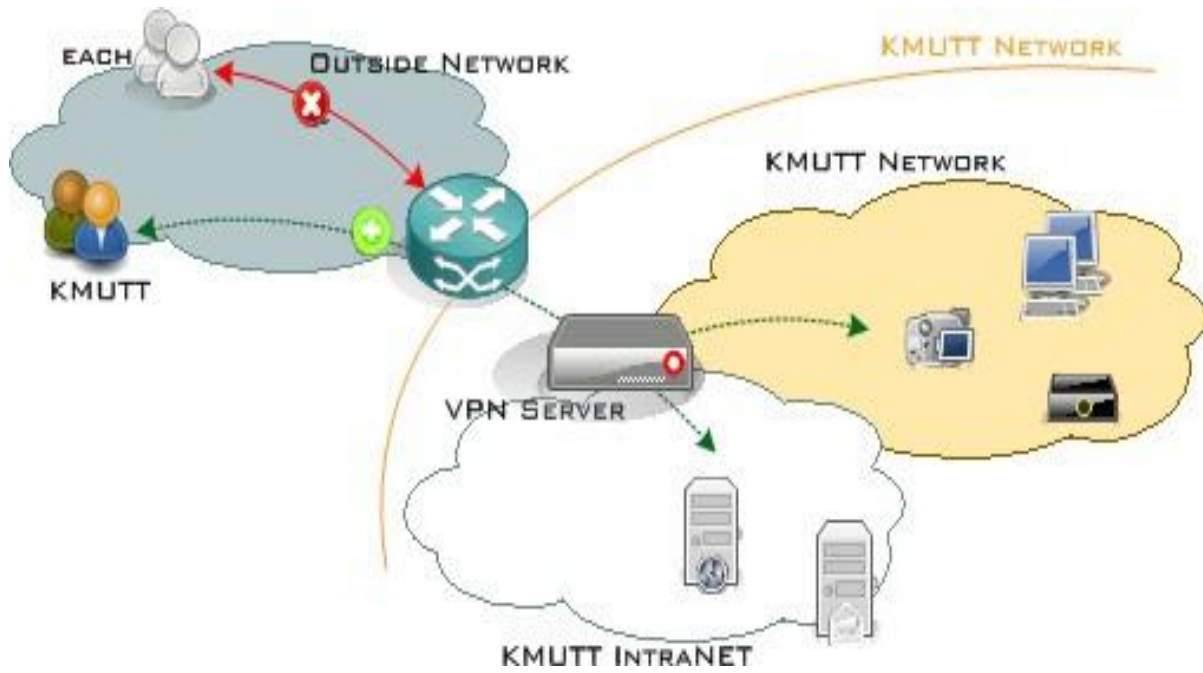


สำนักคอมพิวเตอร์
Computer Center

VIRTUAL PRIVATE NETWORK SERVICE (VPN)

MacOS 26

Virtual Private Network Service



Manual setup L2TP over IPsec for MacOS 26

- [Procedure to set up L2TP/IPsec](#)
 - [Procedure to login into L2TP/IPsec](#)
 - [Procedure to disconnect from L2TP/IPsec](#)
 - [Procedure to uninstall L2TP/IPsec](#)
-

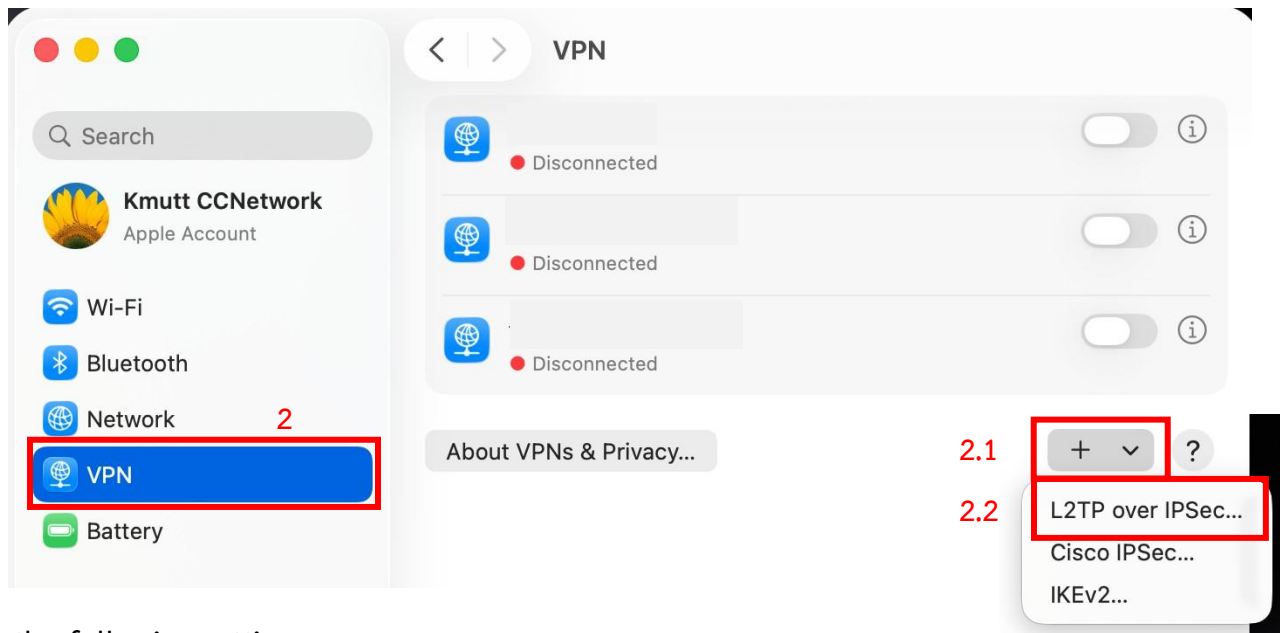
➤ Procedure to set up L2TP/IPsec

1. Go to **Setting**  on Mac

2. Go to **VPN**

2.1 Click **+**

2.2 Click **L2TP over IPsec...**



3. Set the following settings:

3.1 Display name: **KMUTTVPN**

3.2 Configuration: **Default**

3.3 Server address: **vpn.kmutt.ac.th**

3.4 Account name:

Staff: **Front name of Email** Ex. john.xxx@kmutt.ac.th (Use only john.xxx)

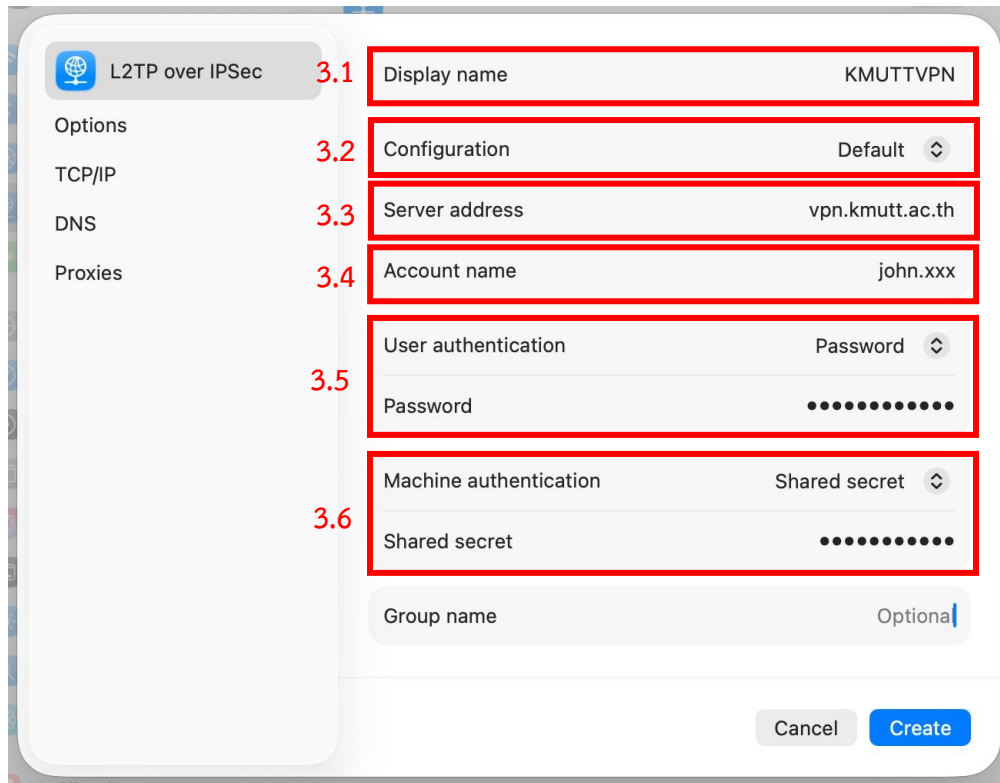
Student: **Student ID** Ex. 67XXXXXXXXXX, 68XXXXXXXXXX

3.5 User authentication: Password

Password: **Same as email password** (Staff & Student)

3.6 Machine authentication: **Shared secret**

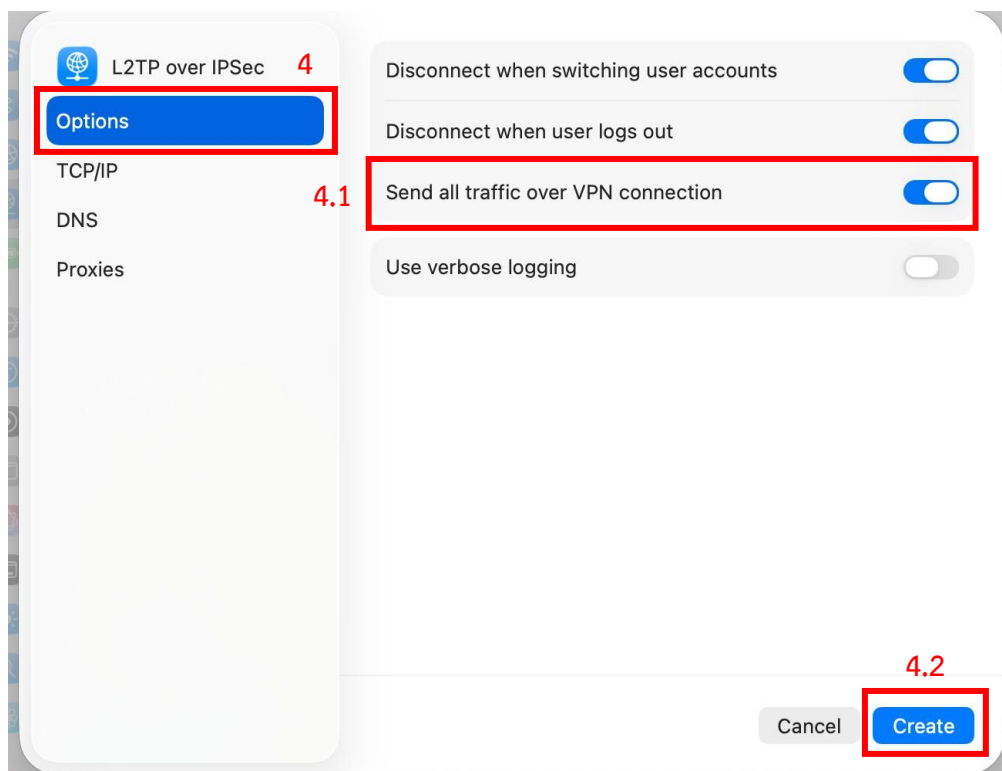
Shared secret: **kmutt.ac.th**



4. Go to **Options**

4.1 **Turn on** Send all traffic over VPN connection

4.2 Click **Create**

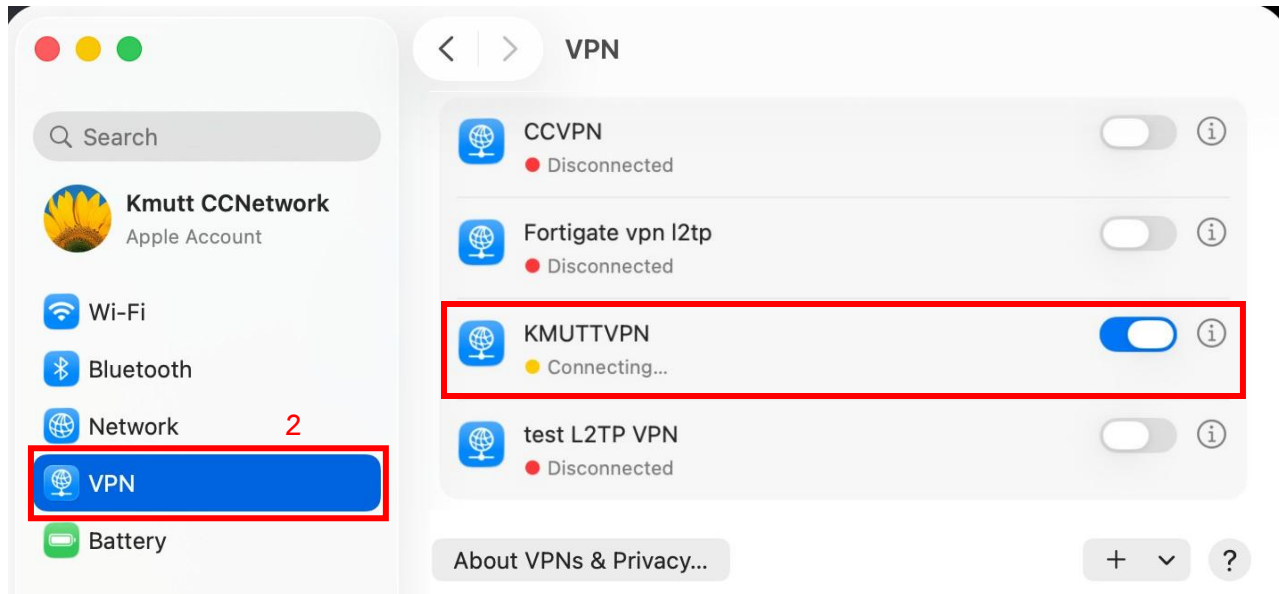


➤ Procedure to login into L2TP/IPsec

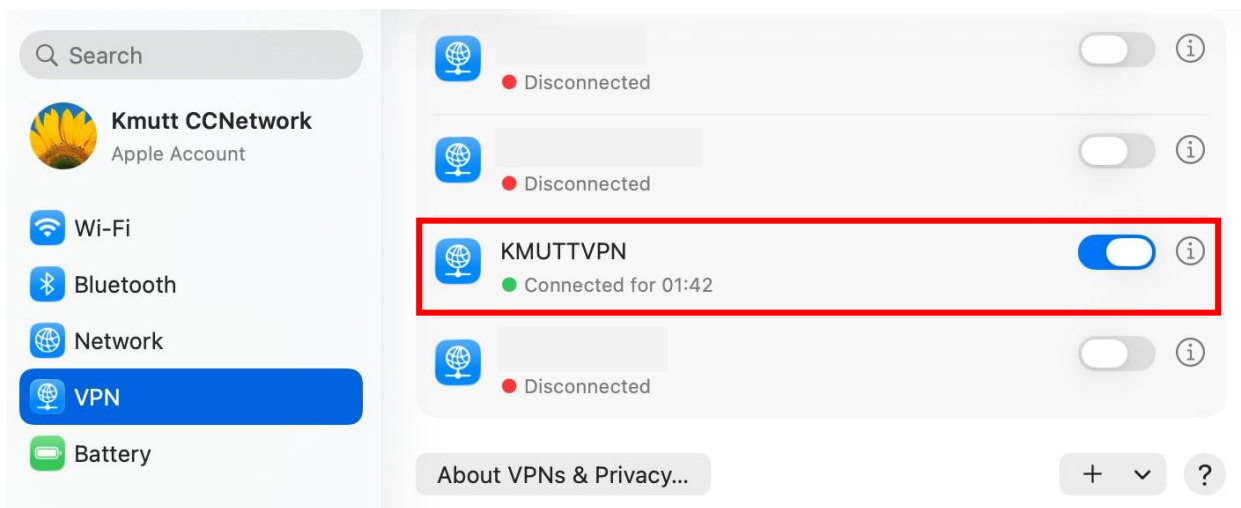
1. Go to **Setting**  on Mac

2. Go to **VPN**

2.1 Connect **KMUTTVPN**



3. When connecting successfully

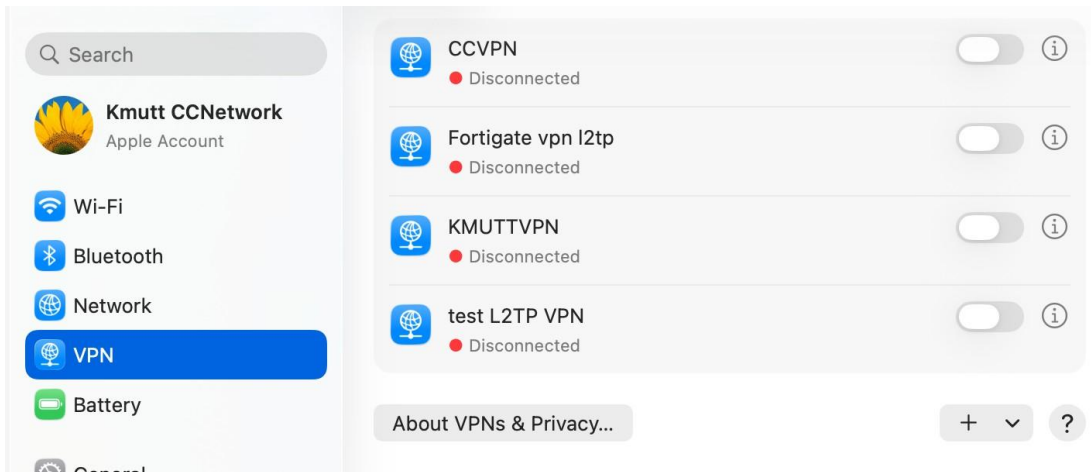


➤ Procedure to disconnect from L2TP/IPsec

1. Go to **Setting**  on Mac

2. Go to **VPN**

2.1 Disconnect **KMUTTVPN**

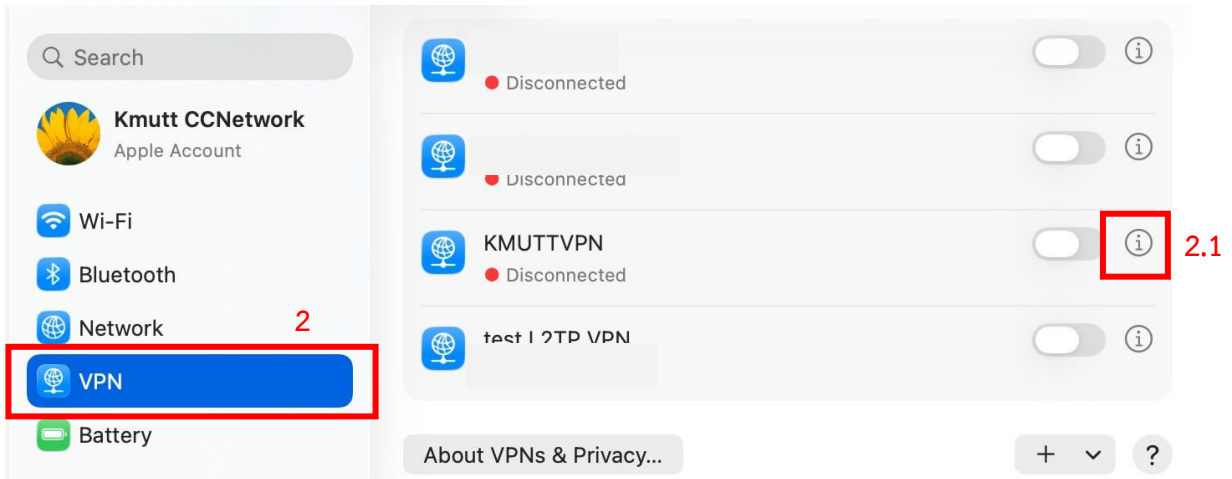


➤ Procedure to uninstall L2TP/IPsec

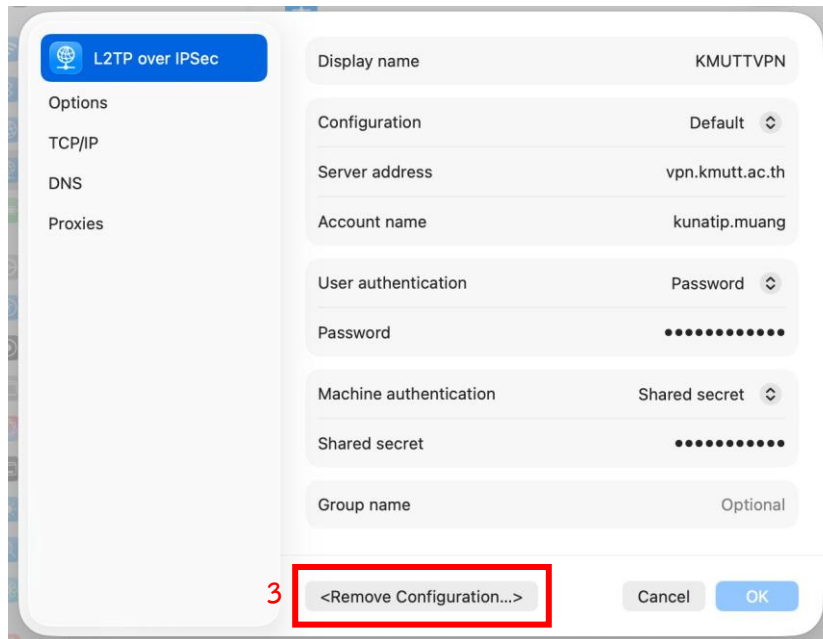
1. Go to **Setting**  on Mac

2. Go to **VPN**

2.1 Click  on **KMUTTVPN** profile (disconnected first)



3. Click **<Remove Configuration...>**



4. Click **Remove**

